

SuperLife KiwiSaver scheme

Australian Financials Fund

Fund update for the quarter ended 31 March 2020

This fund update was first made publicly available on 1 May 2020.

What is the purpose of this update?

This document tells you how the Australian Financials Fund has performed and what fees were charged. The document will help you to compare the fund with other funds. Smartshares Limited prepared this update in accordance with the Financial Markets Conduct Act 2013. This information is not audited and may be updated.

Description of this fund

The Australian Financials Fund invests in the Smartshares Exchange Traded Funds' Smartshares Australian Financials ETF.

| | |
|----------------------------------|-------------------|
| Total value of the fund: | \$561,956 |
| Number of investors in the fund: | 162 |
| The date the fund started: | 21 September 2015 |

What are the risks of investing?

Risk indicator for the Australian Financials Fund¹



The risk indicator is rated from 1 (low) to 7 (high). The rating reflects how much the value of the fund's assets goes up and down. A higher risk generally means higher potential returns over time, but more ups and downs along the way.

To help you clarify your own attitude to risk, you can seek financial advice or work out your risk profile at www.sorted.org.nz/tools/investor-kickstarter.

Note that even the lowest category does not mean a risk-free investment, and there are other risks that are not captured by this rating.

This risk indicator is not a guarantee of a fund's future performance. The risk indicator is based on the returns data for 5 years to 31 March 2020. While risk indicators are usually relatively stable, they do shift from time to time. The risk indicator will continue to be updated in future fund updates.

See the 'Other Material Information' document on the offer register at

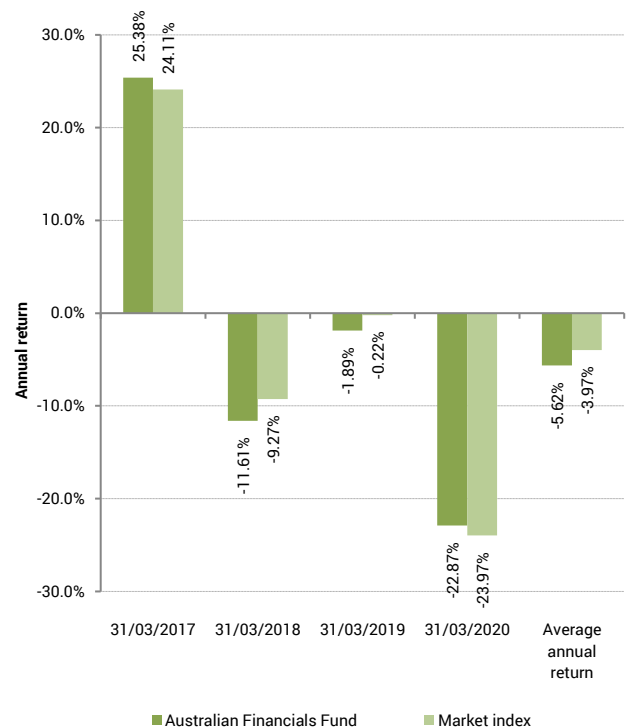
www.disclose-register.companiesoffice.govt.nz for further information about the risks of investing in the SuperLife KiwiSaver scheme.

How has the fund performed?

| | Past year |
|--|-----------|
| Annual return (after deductions for charges and tax) | -22.87% |
| Annual return (after deductions for charges but before tax) | -21.39% |
| Market index annual return (reflects no deduction for charges and tax) | -23.97% |

The market index annual return is based on the annual return of the S&P/ASX 200 Financials Ex-A-REIT Index (converted to the New Zealand dollar). Additional information about the market index is available in the 'Other Material Information' document on the offer register at www.disclose-register.companiesoffice.govt.nz.

Annual return graph





This shows the return after fund charges and tax for each year ending 31 March since the fund started. The last bar shows the average annual return since the fund started, up to 31 March 2020.

Important: This does not tell you how the fund will perform in the future.

Returns in this update are after tax at the highest prescribed investor rate (PIR) of tax for an individual New Zealand resident. Your tax may be lower.

What fees are investors charged?

Investors in the Australian Financials Fund are charged fund charges. In the year to 31 March 2020 these were:

| | % per annum of fund's net asset value |
|--|---------------------------------------|
| Total fund charges | 0.59% |
| Which are made up of: | |
| Total management and administration charges | 0.59% |
| Including: | |
| Manager's basic fee | 0.55% |
| Other management and administration charges | 0.04% |
| Other charges | Dollar amount per investor |
| Administration fee | \$30 per annum |

Investors may also be charged individual action fees for specific actions or decisions (for example, if an investor has a financial adviser and has agreed to pay a fee to the adviser for providing financial advice). See the Product Disclosure Statement for the SuperLife KiwiSaver scheme for more information about those fees.

Small differences in fees and charges can have a big impact on your investment over the long term.

GST is included in the fund charges set out above.

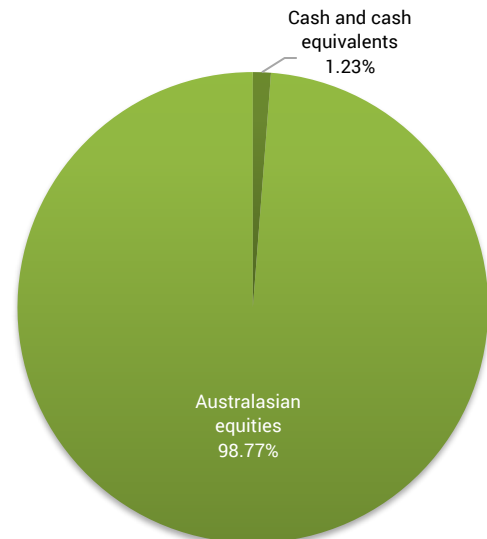
Example of how this applies to an investor

Jess had \$10,000 in the fund and did not make any further contributions. At the end of the year, Jess incurred a loss after fund charges were deducted of -\$2,287 (that is - 22.87% of her initial \$10,000). Jess paid other charges of \$30. This gives Jess a total loss after tax of -\$2,317 for the year.

What does the fund invest in?

Actual investment mix

This shows the types of assets that the fund invests in.



Target investment mix

This shows the mix of assets that the fund generally intends to invest in.

| Asset Category | Target asset mix |
|------------------------------|------------------|
| Cash and cash equivalents | 1.00% |
| New Zealand fixed interest | - |
| International fixed interest | - |
| Australasian equities | 99.00% |
| International equities | - |
| Listed property | - |
| Unlisted property | - |
| Commodities | - |
| Other | - |



Top 10 investments²

| Name | % of fund's net asset value | Type | Country | Credit rating (if applicable) |
|---|-----------------------------|-----------------------|-----------|-------------------------------|
| Commonwealth Bank of Australia | 31.38% | Australasian equities | Australia | |
| Westpac Banking Corp | 16.35% | Australasian equities | Australia | |
| Australia & New Zealand Banking Group Ltd | 14.16% | Australasian equities | Australia | |
| National Australia Bank Ltd | 13.87% | Australasian equities | Australia | |
| Macquarie Group Ltd | 7.83% | Australasian equities | Australia | |
| ASX Ltd | 4.31% | Australasian equities | Australia | |
| Insurance Australia Group Ltd | 4.14% | Australasian equities | Australia | |
| QBE Insurance Group Ltd | 3.39% | Australasian equities | Australia | |
| Suncorp Group Ltd | 3.31% | Australasian equities | Australia | |
| Medibank Pvt Ltd | 2.11% | Australasian equities | Australia | |

The top 10 investments make up 100.85% of the fund's net asset value.

Currency hedging

The fund's foreign currency exposure is not hedged.

Key personnel

This shows the directors and employees who have the most influence on the investment decisions of the fund:

| Name | Current position | Time in current position | Previous or other positions | Time in previous / other position |
|--------------------------------|--|--------------------------|--|-----------------------------------|
| Guy Roulston Elliffe | Director | 4 years and 4 months | Corporate Governance Manager - ACC (current position) | 4 years and 11 months |
| Stuart Kenneth Reginald Millar | Chief Investment Officer - Smartshares | 10 months | Head of Portfolio Management - ANZ Investments | 6 years and 4 months |
| Hugh Duncan Stevens | Chief Executive Officer - Smartshares | 2 years and 1 month | Chief Operating Officer - Implemented Investment Solutions Ltd | 2 years and 6 months |
| Alister John Williams | Director | 4 years and 4 months | Investment Manager - Trust Management | 5 years and 2 months |

Further information

You can also obtain this information, the Product Disclosure Statement for the SuperLife KiwiSaver scheme, and some additional information, from the offer register at www.disclose-register.companiesoffice.govt.nz.

Material changes

There have been no material changes to the nature of the SuperLife KiwiSaver scheme, the investment objectives and strategy of the fund, or the management of the scheme over the quarter ended 31 March 2020.

Notes

- Market index returns (as well as actual returns) have been used to complete the risk indicator, as the fund has not been in existence for 5 years. As a result, the risk indicator may provide a less reliable indicator of the potential future volatility of the fund. The risk indicator for the fund uses 6 months of market index returns.
- The top 10 investments listed in the table exclude current assets and current liabilities, and as a result do not sum to 100%.
- The Smartshares Australian Financials ETF is also managed by Smartshares. As a result, the table lists the individual assets of the Smartshares Australian Financials ETF as if they were individual assets directly held by the fund.